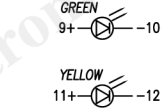
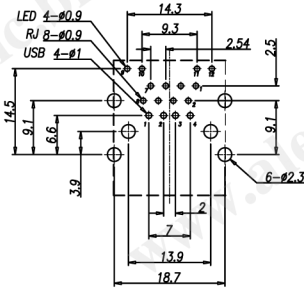
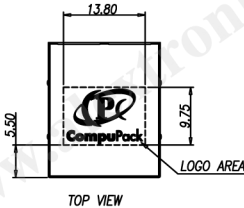
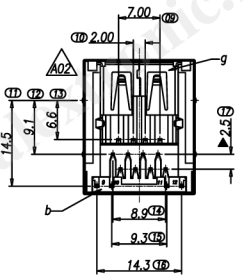
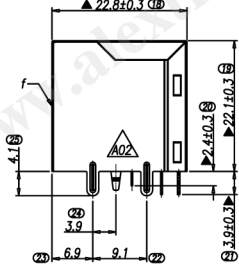
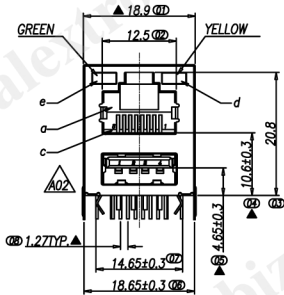


CATEGORY	DESCRIPTION	P/N #
CONNECTOR	RJ45 Over USB, R/A, W/USB, W/LED, W/CPC	MU461R-211X1-0010

▲A02 原料號2MU21R-02DX0-00
變更為MU461R-211X1-0010

REV.	ECN NO.	DESCRIPTION	REVISED	DATE
A1		新訂圖面	XSY	2008.07.23
A02	ECN090810005	修正圖面及料號	Luguan	2009.08.10



MU461R-211X1-0010

Material & Plating

X	Rd Terminal Plating
1	半金鍍 1u"
4	全鍍金
5	半金鍍 6u"

Recommend PCB Layout
(Jack Top View)
Tolerance: ±0.05mm
Recommend PCB Thickness: 1.6mm

SPECIFICATIONS:

- 1.RJ ELECTRICAL CHARACTERISTICS
 1-1:VOLTAGE:150V AC RMS
 1-2:CURRENT RATING:1.5A
 1-3:CONTACT RESISTANCE:30mΩ MAX.
 1-4:INSULATION RESISTANCE:500MΩ MIN.
 1-5:DIELECTRIC WITHSTANG VOLTAGE :1000V AC
 1-6:OPERATURE TEMPERATURE:-40°C~80°C
 1-7:DURABILITY:500 MATING CYCLES MIN.
- 2.USB ELECTRICAL CHARACTERISTICS
 2-1:VOLTAGE:30V AC RMS
 2-2:CURRENT RATING:1.5A
 2-3:CONTACT RESISTANCE:30mΩ MAX.
 2-4:DIELECTRIC WITHSTANG VOLTAGE:500V AC
 2-5:INSULATION RESISTANCE:1000MΩ MIN.
 2-6:OPERATURE TEMPERATURE:-55°C~85°C
 2-7:DURABILITY:1500 MATING CYCLES
 2-8:▲ IS IMPORTANT DIMENSIONS

Table 1

PART NUMBER	Plating
1MO-MJ4501-00	全鍍金
1MO-MJ4501-01	半金鍍 1u"
1MO-MJ4501-02	半金鍍 6u"

g	USB	1	2UB142-FBD20-00	Terminal: Brass C2680, T=0.25mm, Plating: 半金 1u" Housing: PBT4630 UL94V-0, Color: Black Shell: Brass C2680, T=0.3mm, Plating: Ni 50u" MIN.		
f	SHIELDING	1	1SH-MJ4500-1C	Tinplate T=0.25mm		
e	LED	1	1TM-RULED-02	Green		
d	LED	1	1TM-RULED-01	Yellow		
c	RJ INSERT	1	See Table 1	Terminal: Phosphor Bronze C5191, T=0.3mm, Plating: See Table 1 Housing: PBT4630 UL94V-0, Color: Black		
b	COVER	1	1HS-MJ4500-00	PBT4630 UL94V-0 Black		
a	HOUSING	1	1HS-MJ4065-00	PBT4630 UL94V-0 Black		
No.	PART NAME	Q'TY	PART NUMBER	MATERIAL	PLATING & COLOR	REMARK

Product Drawing
ALEXTRONIC

SCALE: 1/1	UNIT: mm	DWG. NO:
SIZE: A3	PAGE: 1 OF 1	REV: A02
APPROVED BY	CHECKED BY	PREPARED BY
WYX	Pengjie	Luguan
ENGINEERING COPY		

UNLESS OTHERWISE SPECIFIED TOLERANCES
 DECIMALS: X ±0.3
 X.X ±0.2
 X.XX ±0.1
 X.XXX ±0.05
 ANGLES: X ±1°
 X.X ±0.5°
 X.XX ±0.1°
 X.XXX ±0.05°

WI-061-159